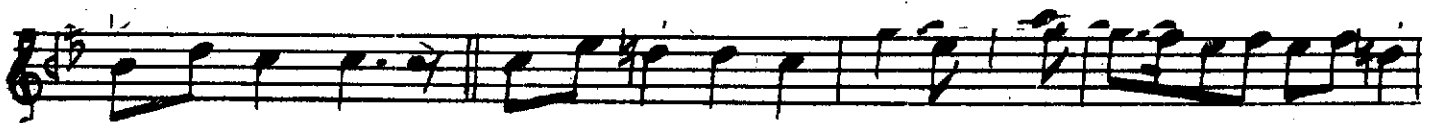
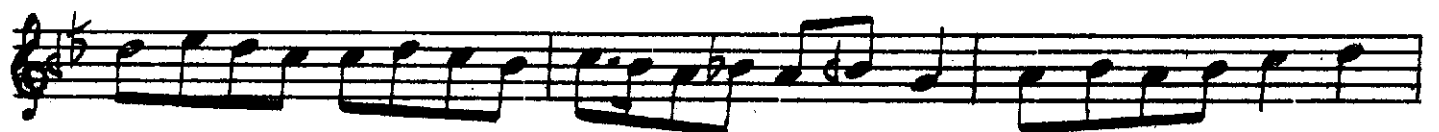
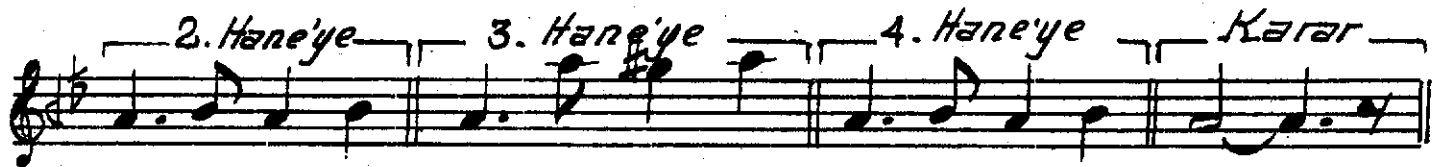
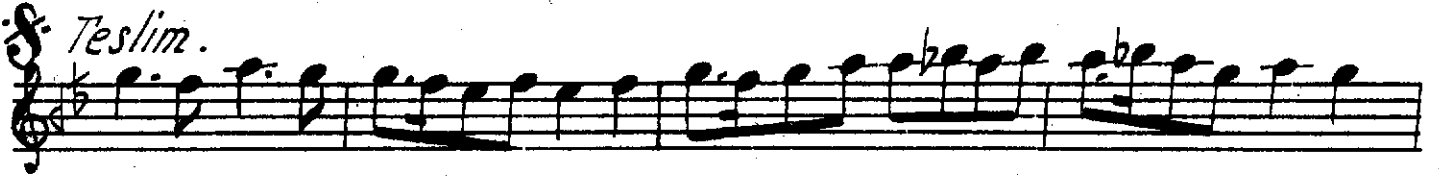
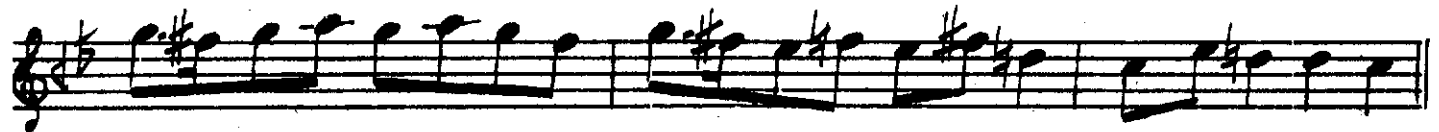
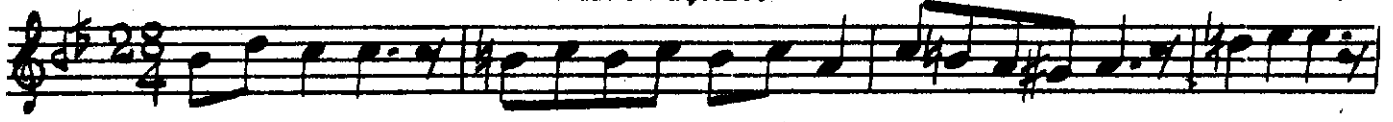


Devr-i kebir

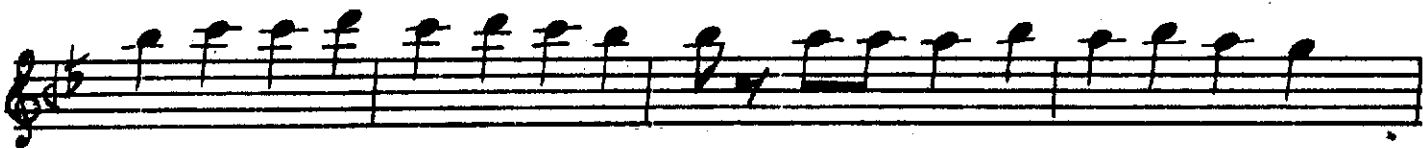
SABABUSELİK PEŞREVİ

Yusuf Paşa

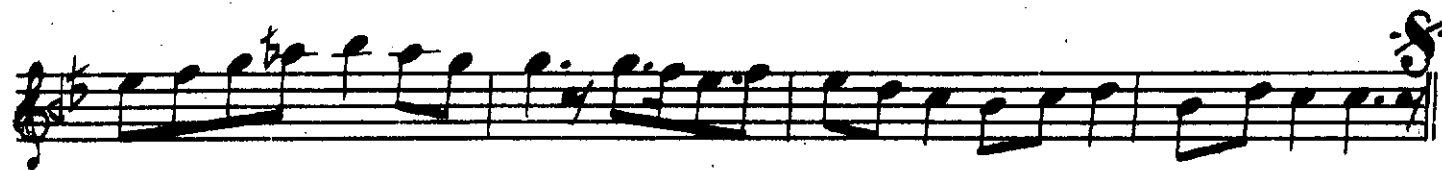




3. Hane



4. Hane.



A . teş ne . . . ze . . . ned . . .
 der . . . di li ma ma . . .
 // . . . la . . . hu . . . hu . . .
 ya hu ya . . . men . . . hu . . .
 Kü . teh ne . . . kü . . . ned . . .
 men . . . zi li ma ma . . .
 // . . . la . . . hu . . .
 ya hu . . . ya . . . men hu . . .
 Ger . a le mi yan . . .
 Cüm . . . le ta bi . . .
 ban . . . ba şed . . . şed . . .
 ya hu ya men . . . hu . . .

hal . li ne . . kü . . ned . .

müş ki li ma' ma

la . hu

ya . hu . . ya . men hu . . ah

hey ley ne a ca yib be ze miş

hüs . ni le ba ri

Bu . su . re ti yâ . ri

bu nak . sı ni gâ ri

Her et li na zar kim gö re tah

sin . o la kâ ri

bu . çeş . mi i zâ ri

kal ma . . ya ka ra ri

Uş şa . kı katar ey le di aşk ic . re Mûham . .
med ol . şa . kı mü mec
.. ced ol . mat la bû mak
şad ol . mat la bû mak
şad Ey . uş tû rû dil
sen o la gör pi . şî ka ta . . .
rı Çek aşkî le ba ri
bî . ver . di le hâ ri Saz
Ben . bil mez i dim giz li â yan
hep sen i miş sin
yâr yâr ma bu . düm . Al .
lah ten lerde vü can lar da ni han .

hep . sen i miş . . . sin . . .

yâr . yâr . . . ma' . bu . düm m

lah Senden . . bu ci han

ıç . re ni şan . . . is ter i dım . . .

ben yâr . yâr . . .

ma' bu . . düm . Al lah . . .

A hır bu nu bil dım ki ci han . . .

hep . sen i miş . . . sin . . .

yâr . . yâr . . . ma' . bu . düm m

lah dost . dost . . .

maksu . düm . Al lah . . .

ah pi . . rim dest . . gi . rim

musical staff with lyrics: mah bu . . . bi men

musical staff with lyrics: ah . . . pi . rim . dest . . gi rim

musical staff with lyrics: mah bu . . . bi men

musical staff with lyrics: Re . . . sı dem ber, te al lül mi

musical staff with lyrics: le kü . . . bi nem der her ya dem

musical staff with lyrics: bi he . . . di me dem hu ya hu

musical staff with lyrics: üü . . . ya men hu

musical staff with lyrics: hu . . . hu

musical staff with lyrics: ya hu . ya men hu

musical staff with lyrics: hu . . . hu

musical staff with lyrics: ya hu ya men hu

musical staff with lyrics: " 2 "

Şi' . . . ri di Şem . . .
 Şi' . . . teb ri . . . zi . . .
 bi . . . ya . . . yid ber . . .
 se . . . ri . ba zar . . .
 bi . . . di di . . . ma . . .
 hi . . . meh rû yes . . .
 he me ya hu . . .
 üü . . . ya . . . men hu . . .
 hu . . . hu . . .
 ya . . . hu . . . ya . . . men hu . . .

Bu Âyin .i Şerif .i Hamamizâde İsmail dede efendi bir
 Selâm olarak bestelemiş, İkinci Selâmdan başlayarak dördüncü
 Selâm sonuna kadar Nevâ Âyin .i Şerif ile tamamlanır.